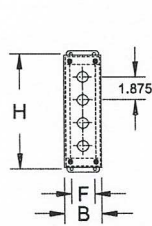


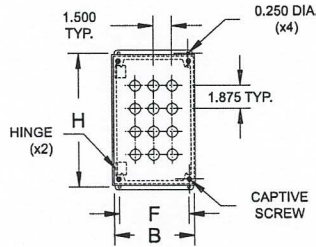


PBM Series

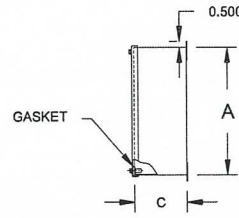
EEMAC / NEMA 12 Miniature Pushbutton Enclosures



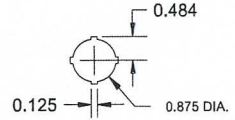
1PBM TO 4PBM



4PBM & UP

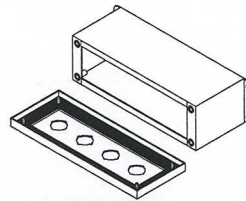


Side View

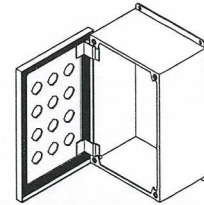


TECHNICAL READOUT

Catalog No.		Dimensions					Weight lbs.
with holes	without holes	A	B	C	H	F	
1PBM	1PBMC	3.25	2.75	3.50	3.750	1.875	1.75
2PBM	2PBMC	5.125	2.75	3.50	5.625	1.875	2.25
3PBM	3PBMC	7.00	2.75	3.50	7.500	1.875	3.00
4PBM	4PBMC	8.875	2.75	3.50	9.375	1.875	3.50
6PBM	6PBMC	8.50	5.00	4.25	9.000	4.125	5.25
9PBM	9PBMC	8.50	6.50	4.25	9.000	5.625	5.75
12PBM	12PBMC	10.375	6.50	4.25	10.875	5.625	6.00
16PBM	16PBMC	10.375	8.00	4.25	10.875	7.125	7.00
20PBM	20PBMC	12.250	8.00	4.25	12.750	7.125	8.00
25PBM	25PBMC	12.250	9.50	4.25	12.750	8.625	9.00
30PBM	30PBMC	14.125	9.50	4.25	14.625	8.625	10.00



1PBM TO 4PBM



4PBM & UP

Application:

Type 12 enclosure designed to accept MINIATURE pushbuttons, switches and pilot lights.

Construction:

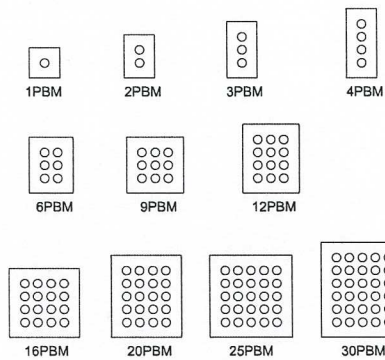
- 16 gauge steel
- Continuously welded and ground smooth seams
- Cover secured by captive nickel plated screws threaded into sealed wells
- Pre-punched 0.875" dia. pushbutton holes (22mm)
- ANSI/ASA61 grey polyester textured powder coating inside out

Also Available:

- Blank cover (add "C" as in 1PBMC)
- Hinged cover and/or sloping front
- Aluminium, SS, galvanized steel & special finishes

Standards:

- CSA certified 150359
- UL listed E109310



PBM Configuration Samples

