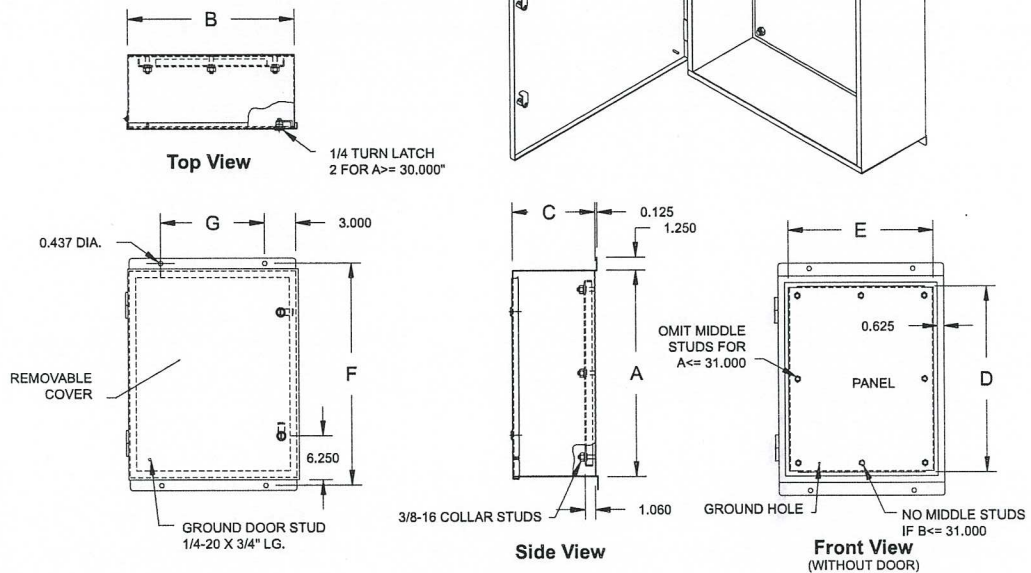




# K Series

# EEMAC / NEMA 1 Single Door Enclosures



## TECHNICAL READOUT

Catalog No.	Dimensions			Panel		Mounting Holes		1/4 Turn Qty.	Weight lbs
	A	B	C	D	E	F	G		
K161208	16	12	8	14	10	17.5	6	1	26
K201608	20	16	8	18	14	21.5	10	1	38
K202008	20	20	8	18	18	21.5	14	1	45
K242008	24	20	8	22	18	25.5	14	1	53
K242010	24	20	10	22	18	25.5	14	1	57
K242410	24	24	10	22	22	25.5	18	1	66
K302008	30	20	8	28	18	31.5	14	2	65
K302408	30	24	8	28	22	31.5	18	2	77
K302410	30	24	10	28	22	31.5	18	2	83
K302412	30	24	12	28	22	31.5	18	2	92
K302416	30	24	16	28	22	31.5	18	2	100
K362408	36	24	8	34	22	37.5	18	2	90
K362410	36	24	10	34	22	37.5	18	2	95
K363010	36	30	10	34	28	37.5	24	2	115
K363012	36	30	12	34	28	37.5	24	2	127
K363016	36	30	16	34	28	37.5	24	2	140
K422410	42	24	10	40	22	43.5	18	2	106
K423012	42	30	12	40	28	43.5	24	2	131
K423612	42	36	12	40	34	43.5	30	2	156

### Application:

Type 1 general purpose enclosure designed to house electrical, pneumatic or hydraulic instruments

### Construction:

- 16 or 14 gauge steel
- Slip hinges enabling door removal for easier access and mounting
- 1/4 turn latch
- 14 or 12 gauge galvanized steel panel on collar studs natural finish (unpainted)
- Grounding stud on inner cover surface
- Grounding hole on mounting panel with grounding screw
- ANSI/ASA61 grey polyester textured powder coating inside out

### Also Available:

- Aluminium, SS, galvanized steel
- Cutouts, louvers, handles
- Special finishes and sizes

### Standards:

- CSA certified 150359
- UL listed E109310





**TECHNICAL READOUT**

Catalog No.	Box Size		Panel Size		Weight lbs.
	Height	Width	Height	Width	
AKP2016	20	x 16	19.85	x 15.85	8
AKP2020	20	x 20	19.85	x 19.85	10
AKP2420	24	x 20	23.85	x 19.85	13
AKP2424	24	x 24	22	x 22	15
AKP3020	30	x 20	28	x 18	16
AKP3024	30	x 24	28	x 22	19
AKP3624	36	x 24	34	x 22	23
AKP3630	36	x 30	34	x 28	29
AKP4224	42	x 24	40	x 22	27
AKP4230	42	x 30	40	x 28	35
AKP4236	42	x 36	40	x 34	42
AKP4836	48	x 36	46	x 34	47

**AKP SERIES**

**Spare inner panels for all K enclosures**

- Made from 14 and 12 gauge galvanized steel depending on sizes
- Galvanized natural finish (unpainted)

**TECHNICAL READOUT**

Catalog No.	Box Size		Panel Size		Weight lbs.
	Height	Width	Height	Width	
AMCP2713	27	x 13	23	x 9	6
AMCP2020	20	x 20	16	x 16	7
AMCP3020	30	x 20	26	x 16	11
AMCP3030	30	x 30	26	x 26	18
AMCP3636	36	x 36	32	x 32	31
AMCP4848	48	x 48	44	x 44	46

**AMCP SERIES**

**Spare inner panels for all MC enclosures**

- Made from 16 and 14 gauge steel
- ANSI/ASA61 grey polyester textured powder coating inside out
- Supplied with on grounding screw

