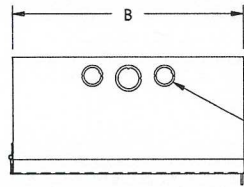




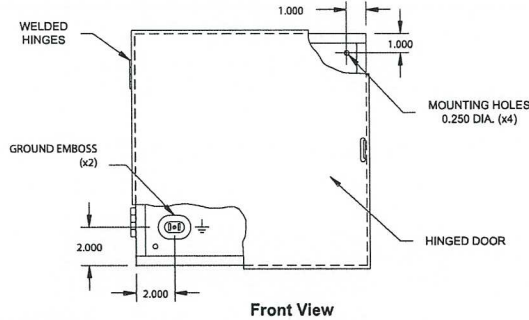
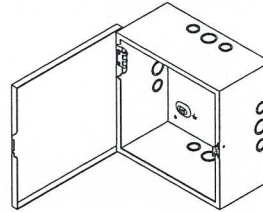
CKO / C Series

EEMAC / NEMA 1 Hinged Door Boxes

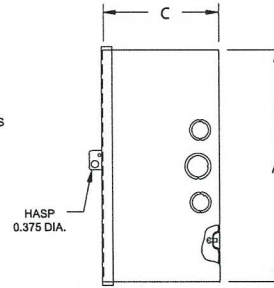


Top View

OPTIONAL KO'S
SEE TABLE FOR
QTY. & SIZES



Front View



Side View

TECHNICAL READOUT

Catalog No.	Dimensions (box)			Knockouts		Weight lbs.
	A	B	C	Sides	Top & bottom	
SINGLE DOOR						
CKO12126	12	12	6	2a/1b	2a/1b	11.5
C12126				No Ko's		
CKO18126	18	12	6	2a/3b	2a/1b	15
C18126				No Ko's		
CKO24126	24	12	6	2a/3b	2a/3b	19
C24126				No Ko's		
CKO16166	16	16	6	2a/3b	2a/3b	17
C16166				No Ko's		
CKO18186	18	18	6	2a/3b	2a/3b	22
C18186				No Ko's		
CKO20206	20	20	6	2a/3b	2a/3b	32
C20206				No Ko's		
CKO24246	24	24	6	2a/3b	2a/3b	41
C24246				No Ko's		
C202010	20	20	10	No Ko's		40
DOUBLE DOOR						
C303012	30	30	12			62
C363612	36	36	12			81
C484812	48	48	12	No Ko's		132

Knockouts (Conduit Size): a = 1/2" - 3/4" • b = 3/4" - 1"

Application:

Type 1 surface mounted enclosure generally used as a junction or pull box, switch box or general service box.

Construction:

- 16 or 14 gauge steel
- With easily removable knockouts (CKO) or without (C)
- Mounting holes on back
- Steel butt hinges
- Retractable sealing hasp
- Grounding emboss on 12126; grounding hole on larger sizes grounding screw provided with each size
- ANSI/ASA61 grey polyester textured powder coating inside out

Also Available:

- Aluminium, SS, galvanized steel
- Cutouts, louvers, additional knockouts
- Tamper proof screw
- Special finishes & sizes

Standards:

- CSA certified 150359
- UL listed E109311

