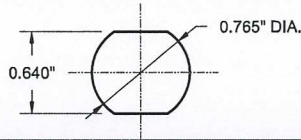




## Accessories

## Special Handles

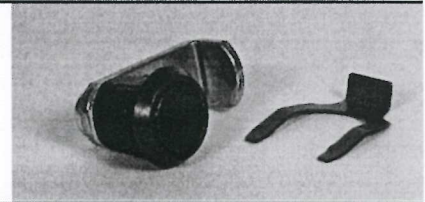


Quarter turn standard cut out, for A11KK, A16KS, A12KTC, A15KR and A15KRK

### Cat. No. A11KK

#### Flush Lock Kits 1/4 Turn Latch

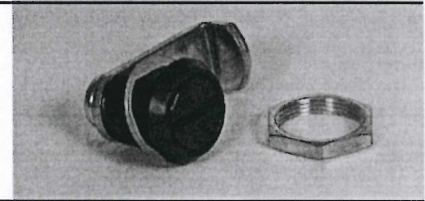
- Used on K Series
- High quality black zinc plated
- Supply with latch and clip for easy field installation
- Rated NEMA 1



### Cat. No. A16KS

#### Flush Lock Kits 1/4 Turn Latch

- Used on S Series
- High quality black zinc plated
- Supply with latch gasket, nut and O-ring gasket for field installation
- Rated NEMA 12-4



### Cat. No. A16KSK

#### Flush Key Lock Kit

- Used for S Series
- High quality black zinc plated
- Supply with latch gasket, nut and O-ring gasket for field installation
- Rated NEMA 12-3R



### Cat. No. A12KTC

#### Flush Key Lock Kit 1/4 Turn Latch

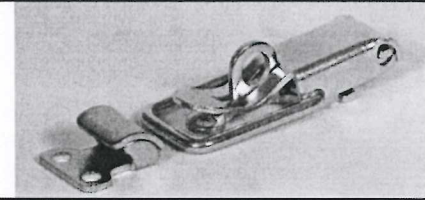
- Used on TCS and TCF Series
- High quality black zinc plated
- Supplied with latch and clip for easy field installation
- General purpose application only
- Rated NEMA 1



### Cat. No. A14K

#### Toggle Pull Catch

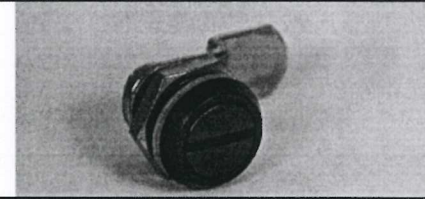
- Made from steel, zinc plated
- Provides a provision from padlock
- To be mounted externally, suitable for oil-tight enclosures
- Rated NEMA 12-4



### Cat. No. A15KR

#### Flush Lock Kit 1/4 Turn Latch

- Used on R Series
- High quality black zinc plated
- Supply with latch gasket, nut and O-ring gasket for field installation
- Rated NEMA 12-4



### Cat. No. A15KRK

#### Flush Key Lock Kit

- Used on R Series
- High quality black zinc plated
- Rated NEMA 12-3R

