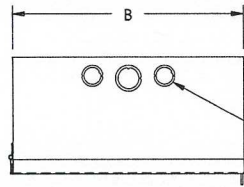




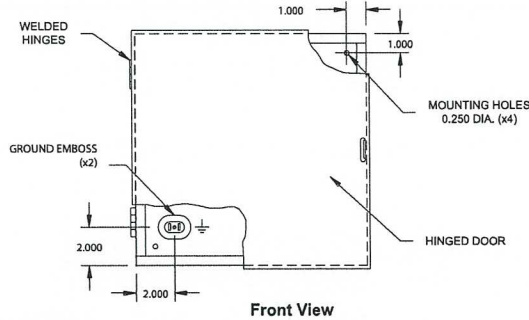
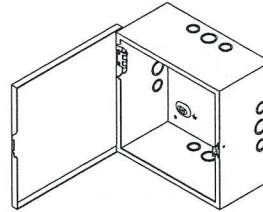
CKO / C Series

EEMAC / NEMA 1 Hinged Door Boxes

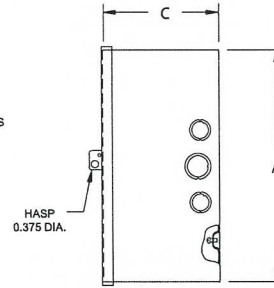


Top View

OPTIONAL KO'S
SEE TABLE FOR
QTY. & SIZES



Front View



Side View

TECHNICAL READOUT

| Catalog No. | Dimensions (box) | | | Knockouts | | Weight lbs. |
|--------------------|------------------|----|----|------------------|--------------|-------------|
| | A | B | C | Sides | Top & bottom | |
| SINGLE DOOR | | | | | | |
| CKO12126 C12126 | 12 | 12 | 6 | 2a/1b No Ko's | 2a/1b | 11.5 |
| CKO18126 C18126 | 18 | 12 | 6 | 2a/3b No Ko's | 2a/1b | 15 |
| CKO24126 C24126 | 24 | 12 | 6 | 2a/3b No Ko's | 2a/3b | 19 |
| CKO16166 C16166 | 16 | 16 | 6 | 2a/3b No Ko's | 2a/3b | 17 |
| CKO18186 C18186 | 18 | 18 | 6 | 2a/3b No Ko's | 2a/3b | 22 |
| CKO20206 C20206 | 20 | 20 | 6 | 2a/3b No Ko's | 2a/3b | 32 |
| CKO24246 C24246 | 24 | 24 | 6 | 2a/3b No Ko's | 2a/3b | 41 |
| C202010 | 20 | 20 | 10 | No Ko's | | 40 |
| DOUBLE DOOR | | | | | | |
| C303012 | 30 | 30 | 12 | | | 62 |
| C363612 | 36 | 36 | 12 | | | 81 |
| C484812 | 48 | 48 | 12 | No Ko's | | 132 |

Knockouts (Conduit Size): a = 1/2" - 3/4" • b = 3/4" - 1"

Application:

Type 1 surface mounted enclosure generally used as a junction or pull box, switch box or general service box.

Construction:

- 16 or 14 gauge steel
- With easily removable knockouts (CKO) or without (C)
- Mounting holes on back
- Steel butt hinges
- Retractable sealing hasp
- Grounding emboss on 12126; grounding hole on larger sizes grounding screw provided with each size
- ANSI/ASA61 grey polyester textured powder coating inside out

Also Available:

- Aluminium, SS, galvanized steel
- Cutouts, louvers, additional knockouts
- Tamper proof screw
- Special finishes & sizes

Standards:

- CSA certified 150359
- UL listed E109311

