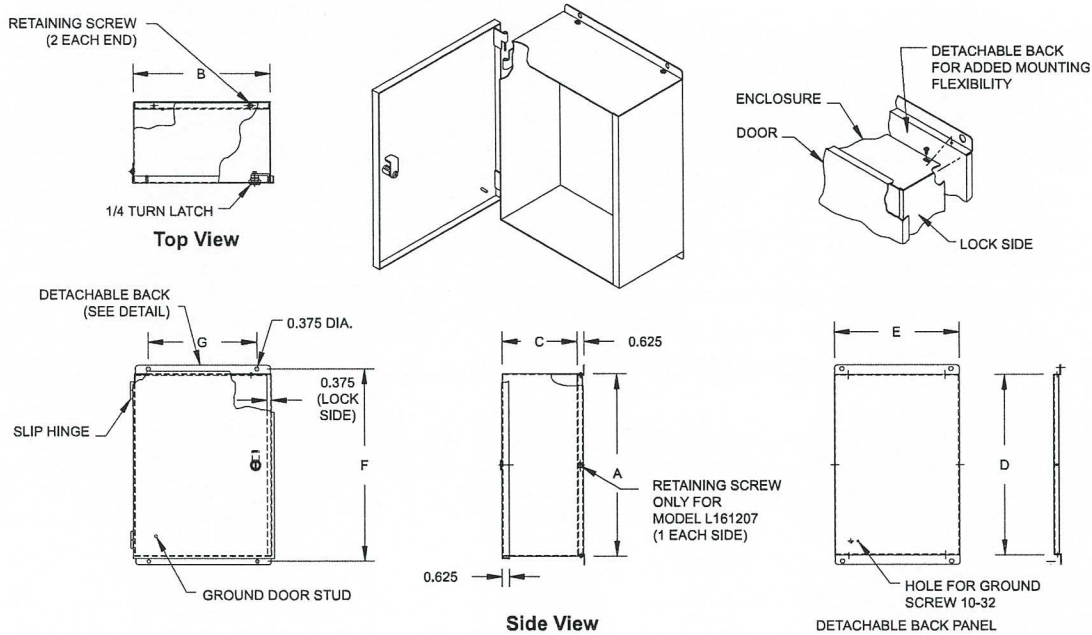




L Series

EEMAC / NEMA 1 Single Door Enclosures



Application:

Type 1 general purpose enclosure designed to house electrical, pneumatic or hydraulic instruments

Construction:

- 16 gauge steel frame and door
- 16 or 14 gauge steel detachable mounting back
- Slip hinges enabling door removal for easier access and mounting
- 1/4 turn latch
- Grounding stud on inner door side
- Grounding screw on detachable back
- ANSI/ASA61 grey polyester textured powder coating inside out

Also Available:

- Aluminium, SS, galvanized steel
- Cutouts, hubs
- Special finishes & sizes

Standards:

- CSA certified 150359
- UL listed E109310

TECHNICAL READOUT

Catalog No.	Dimensions			Panel		Mounting Holes		Weight lbs
	A	B	C	D	E	F	G	
L080606	8	6	6	7.849 x	5.849	8.875	3.5	6
L100804	10	8	4	9.849 x	7.849	10.875	5.5	12
L100806	10	8	6	9.849 x	7.849	10.875	5.5	8.5
L121007	12	10	7	11.849 x	9.849	12.875	7.5	16
L151206	15	12	6	14.849 x	11.849	15.875	9.5	25
L161207	16	12	7	15.849 x	11.849	16.875	9.5	21

